

POSTERS

# MY SCHOOL COUNSELOR

ADVOCATE

SUPPORTER

MENTOR

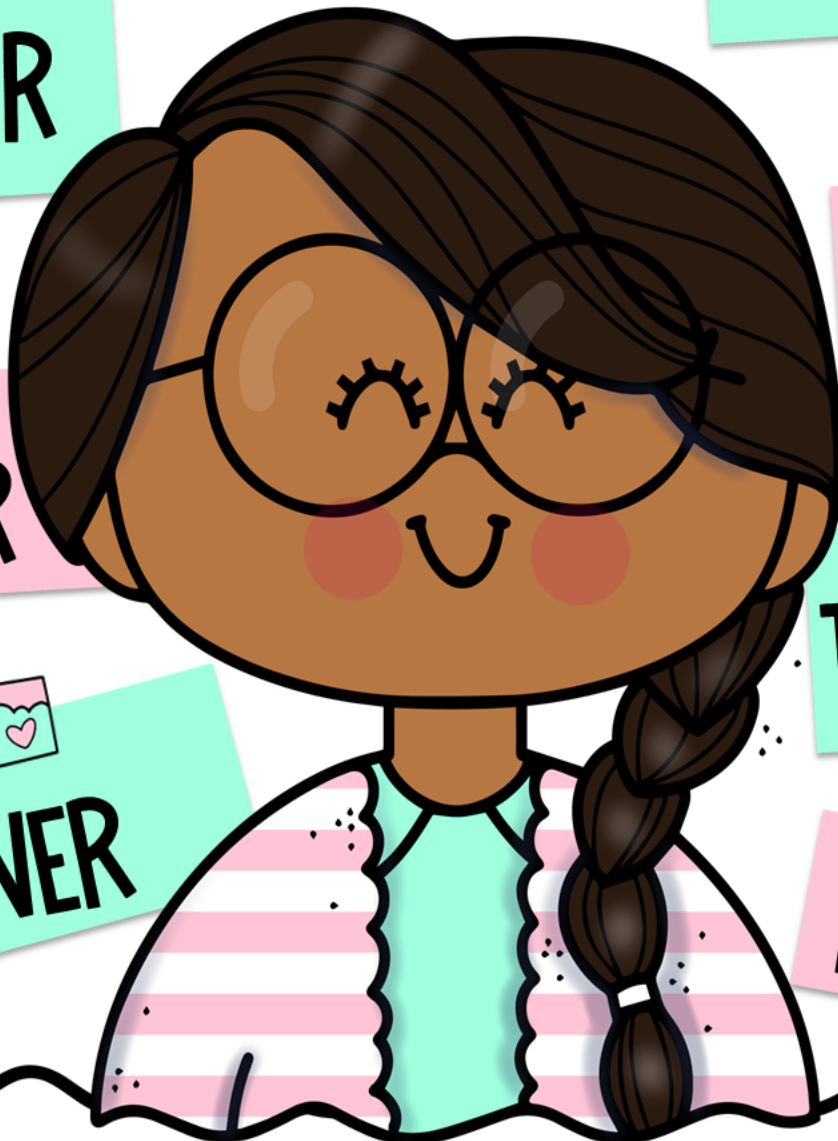
SOLVER

HELPER

TEACHER

LISTENER

LEADER





# MY SCHOOL COUNSELOR



**ADVOCATE**



**SUPPORTER**



**MENTOR**



**SOLVER**



**HELPER**



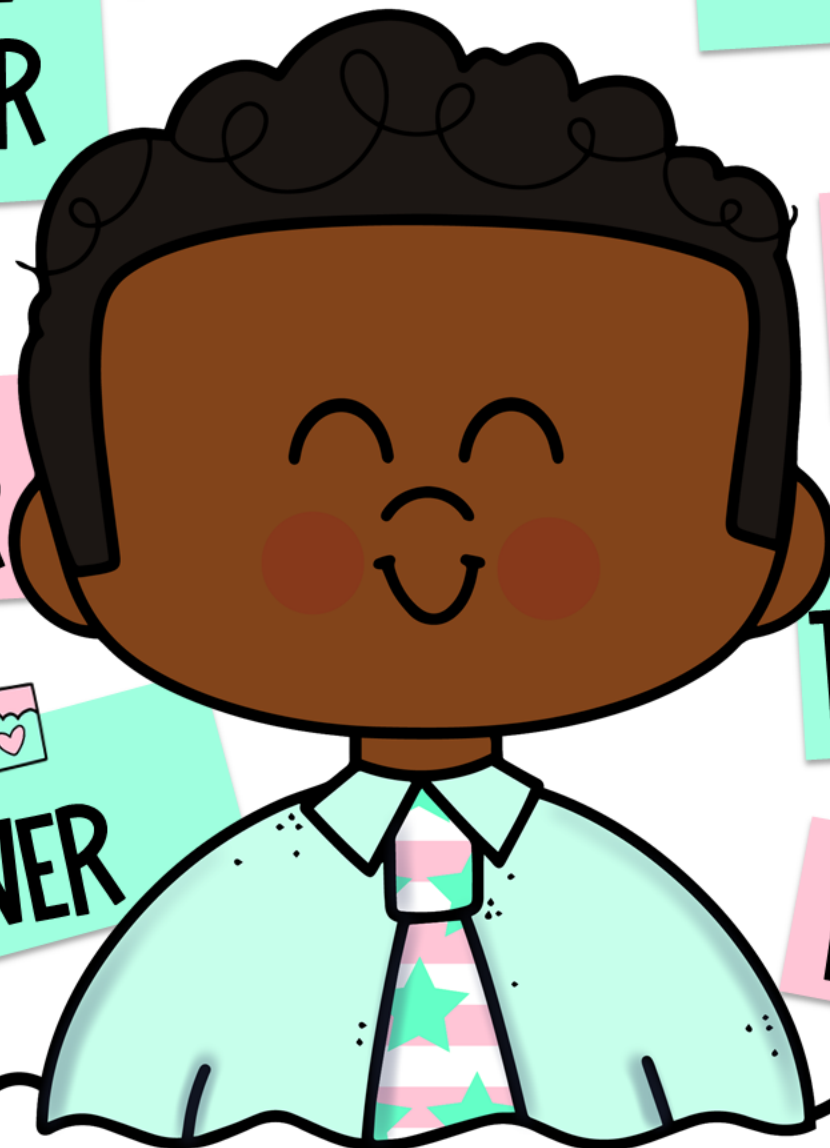
**TEACHER**



**LISTENER**



**LEADER**





# MY SCHOOL COUNSELOR



**ADVOCATE**



**SUPPORTER**



**MENTOR**



**SOLVER**



**HELPER**



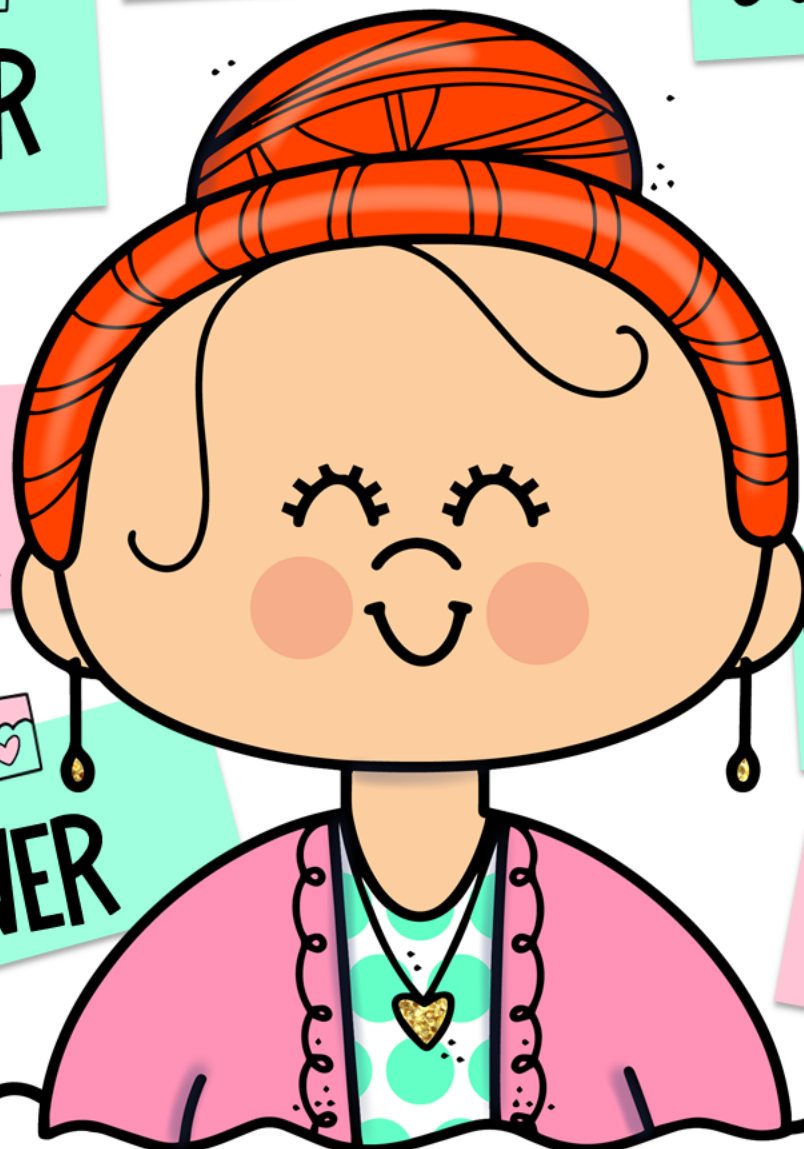
**TEACHER**



**LISTENER**



**LEADER**







# MY SCHOOL COUNSELOR



**ADVOCATE**



**SUPPORTER**



**MENTOR**



**SOLVER**



**HELPER**



**TEACHER**



**LISTENER**



**LEADER**





# MY SCHOOL COUNSELOR



**ADVOCATE**



**SUPPORTER**



**MENTOR**



**HELPER**



**SOLVER**



**TEACHER**



**LISTENER**



**LEADER**





# MY SCHOOL COUNSELOR



**ADVOCATE**



**SUPPORTER**



**MENTOR**



**HELPER**



**SOLVER**



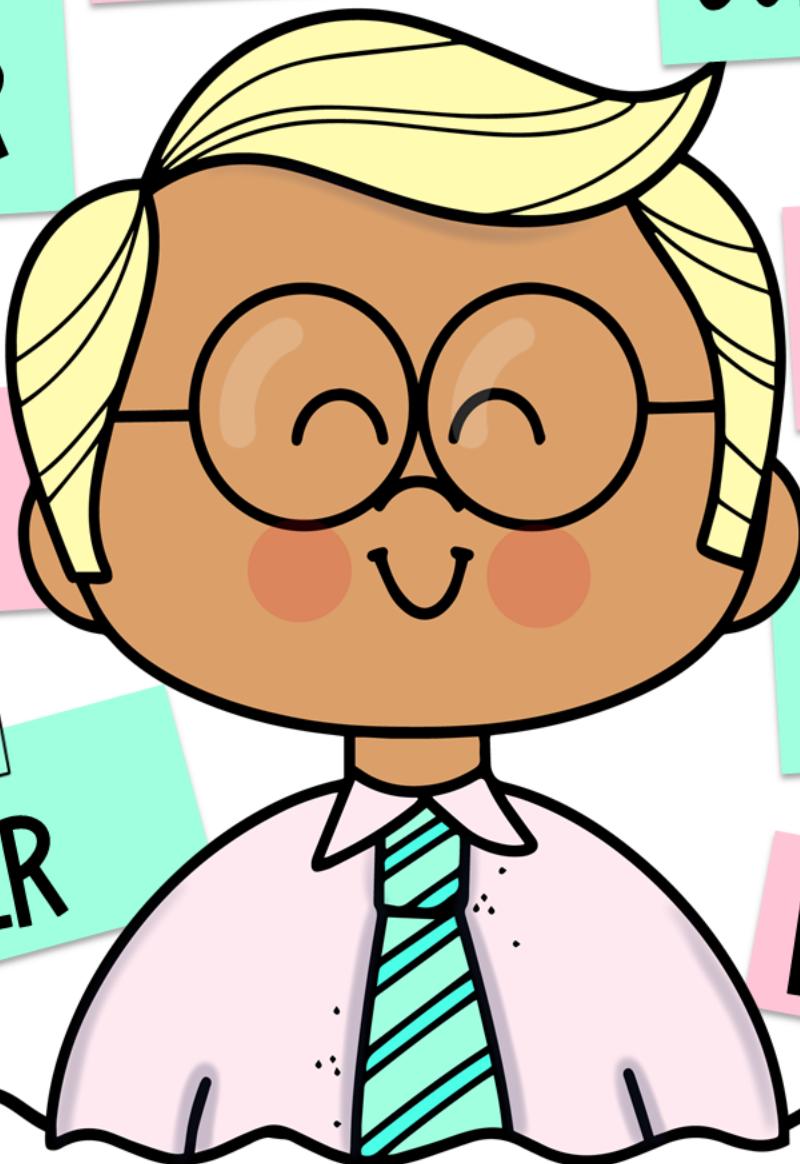
**TEACHER**



**LISTENER**



**LEADER**







# MY SCHOOL COUNSELOR



**MENTOR**



**ADVOCATE**



**SUPPORTER**



**HELPER**



**SOLVER**



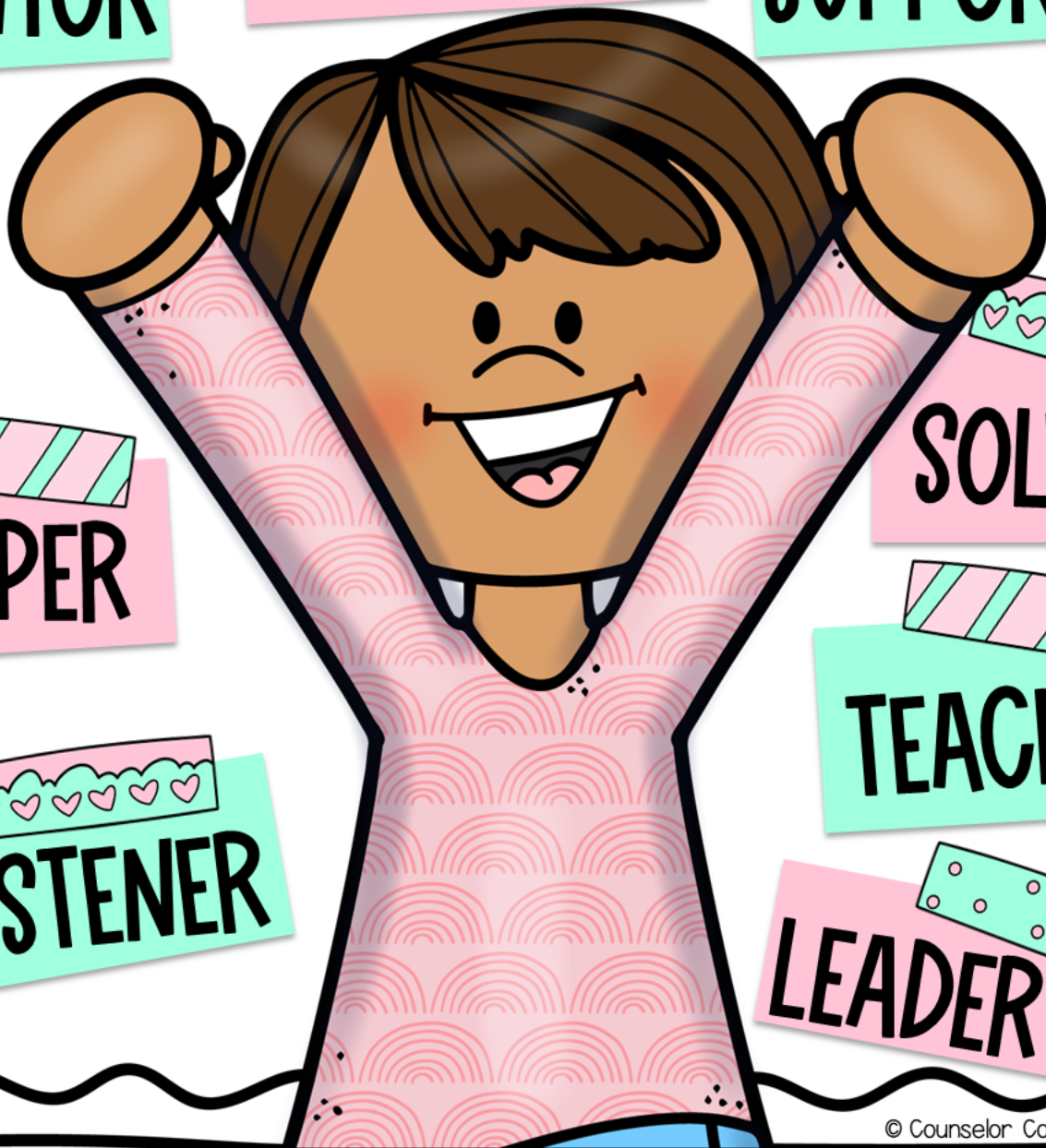
**LISTENER**



**TEACHER**



**LEADER**







# MY SCHOOL COUNSELOR



**ADVOCATE**



**SUPPORTER**



**MENTOR**



**SOLVER**



**HELPER**



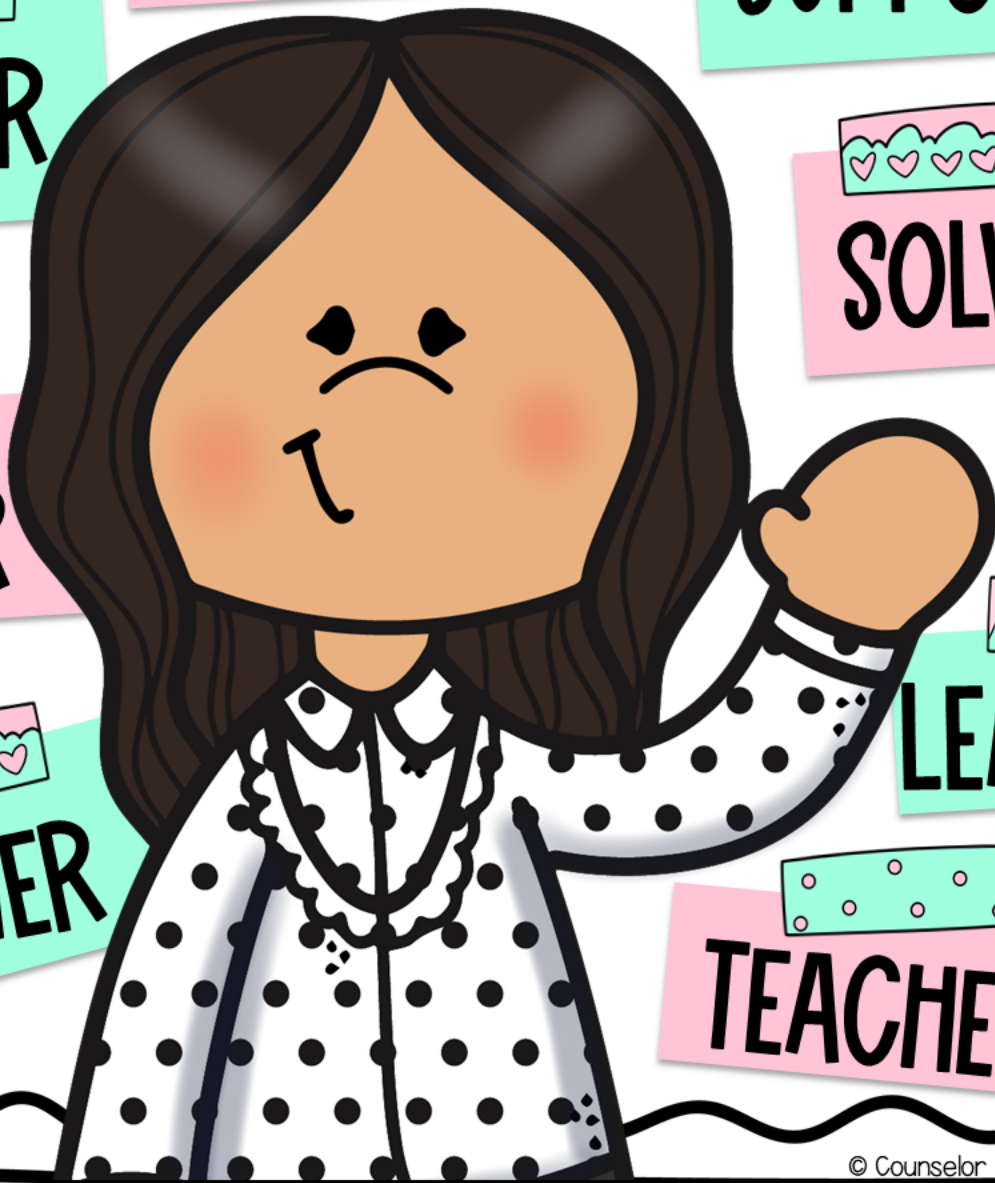
**LEADER**



**LISTENER**



**TEACHER**





# MY SCHOOL COUNSELOR



ADVOCATE



SUPPORTER



MENTOR



HELPER



SOLVER



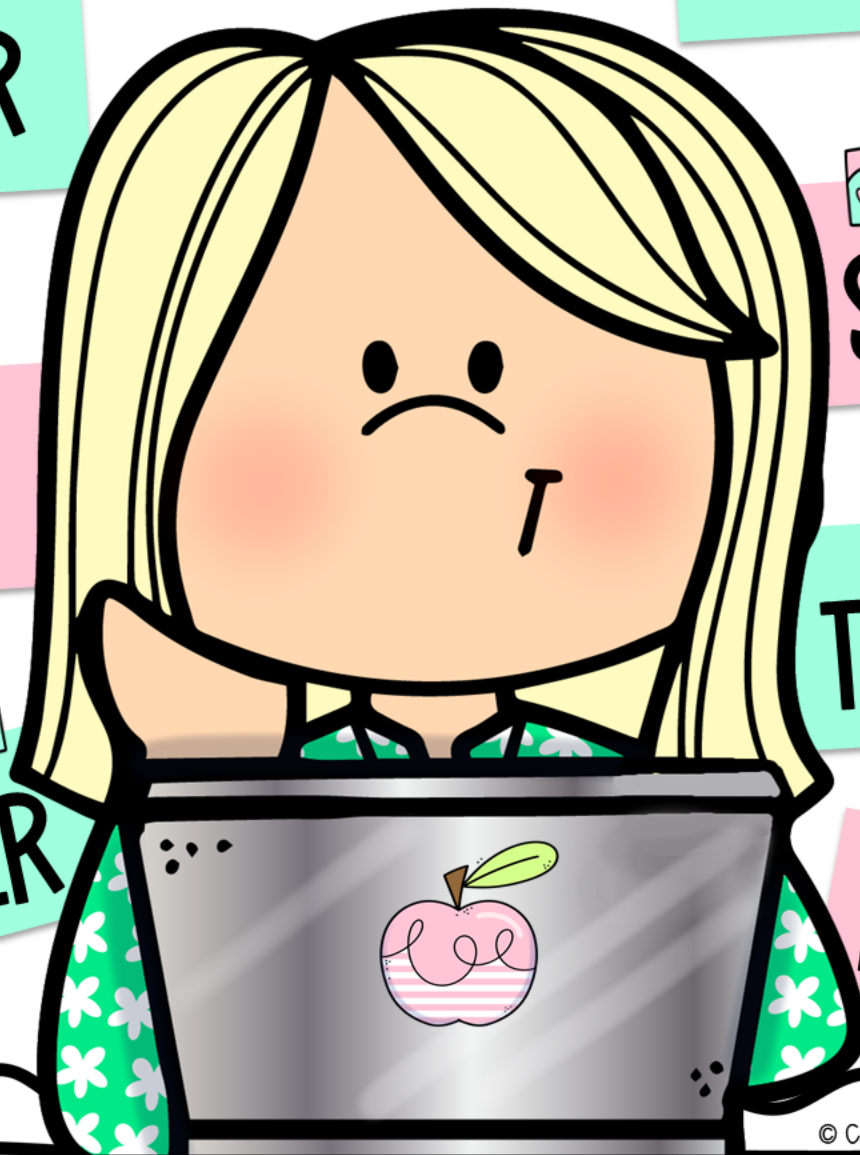
TEACHER



LISTENER



LEADER



# FILL IN THE BLANK ACTIVITY



# MY SCHOOL COUNSELOR



**ADVOCATE**



**SUPPORTER**



**MENTOR**



**SOLVER**



**HELPER**



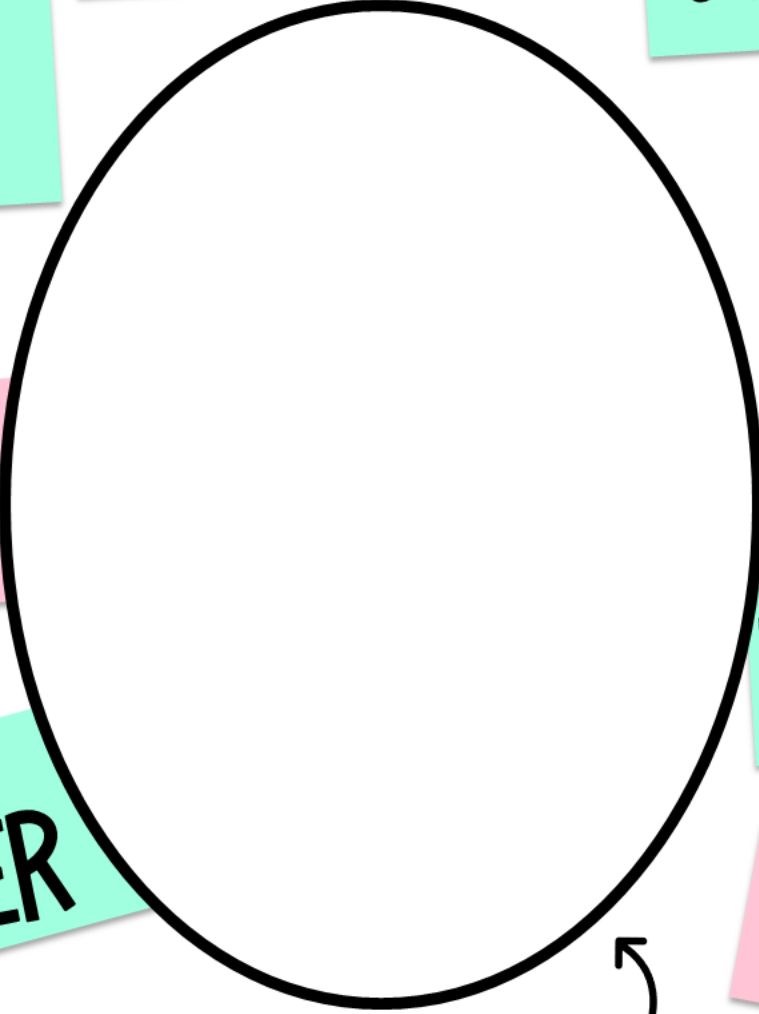
**TEACHER**



**LISTENER**

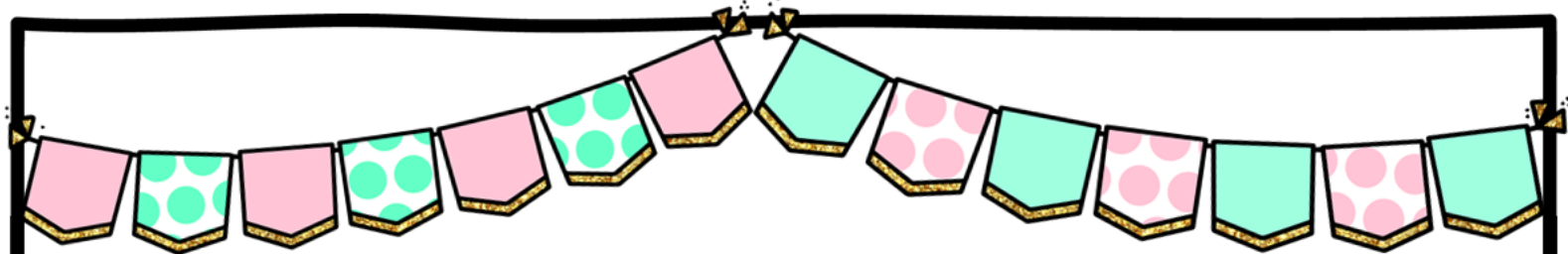


**LEADER**



Draw your Counselor here





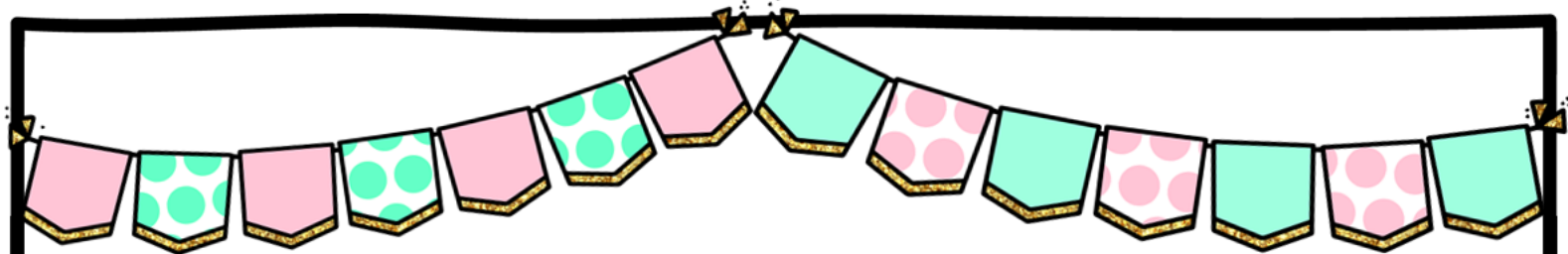
# MY SCHOOL COUNSELOR

Write in the spaces below the traits that describe what your School Counselor does.

A large, empty circle is centered on the page, intended for drawing a school counselor. Surrounding this central circle are several rectangular sticky notes in pink and teal colors. Some of these notes have decorative borders: one has a row of hearts, another has a row of dots, and others have diagonal stripes. The sticky notes are arranged in a way that they appear to be stuck to the page around the central drawing area.

Draw your Counselor here

# CUT AND PASTE ACTIVITY

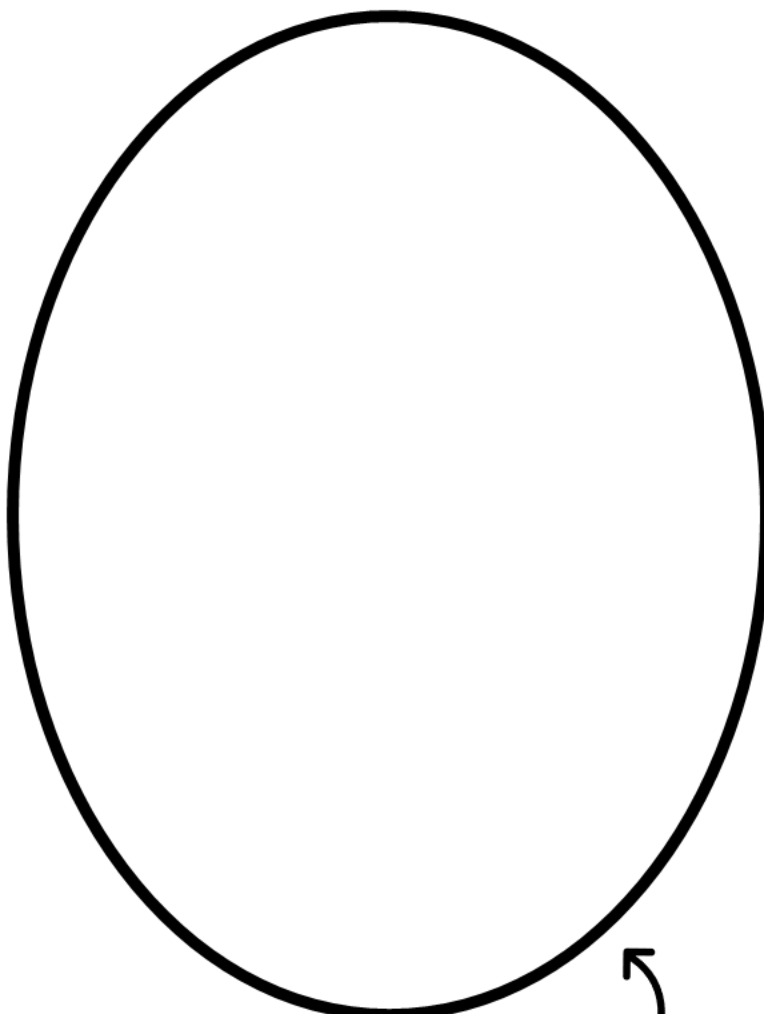


# MY SCHOOL COUNSELOR

Cut the traits that describe what your School Counselor does (on the next page), and paste them to this page around the picture of your counselor.

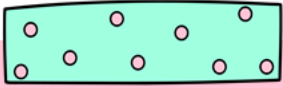
My School Counselor's name is:

\_\_\_\_\_



Draw your Counselor here

Cut the traits below that describe what your School Counselor does, and paste them to the previous page.



**ADVOCATE**



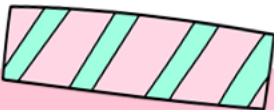
**SUPPORTER**



**MENTOR**



**SOLVER**



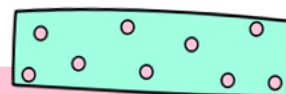
**HELPER**



**TEACHER**



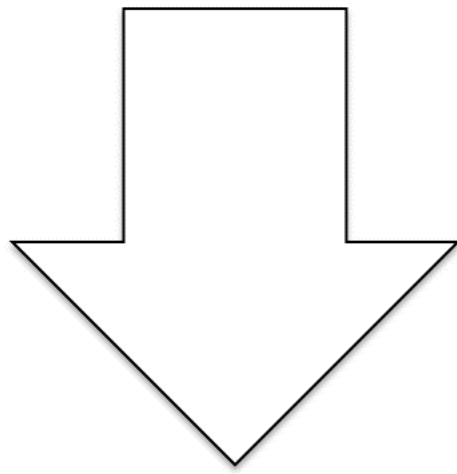
**LISTENER**



**LEADER**



BLACK AND WHITE  
VERSION



POSTERS

# MY SCHOOL COUNSELOR

**ADVOCATE**

**SUPPORTER**

**MENTOR**

**SOLVER**

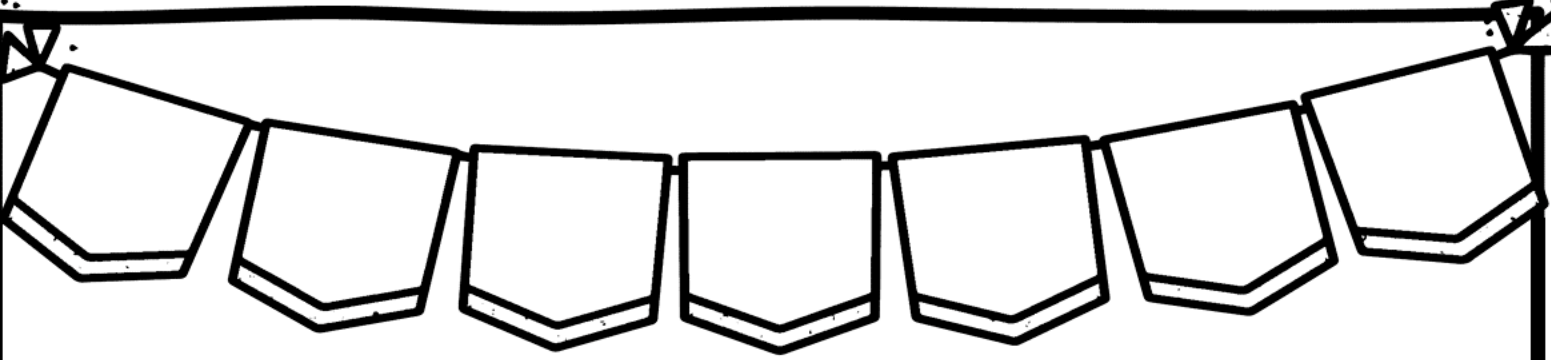
**HELPER**

**TEACHER**

**LISTENER**

**LEADER**





# MY SCHOOL COUNSELOR



**ADVOCATE**



**SUPPORTER**



**MENTOR**



**SOLVER**



**HELPER**



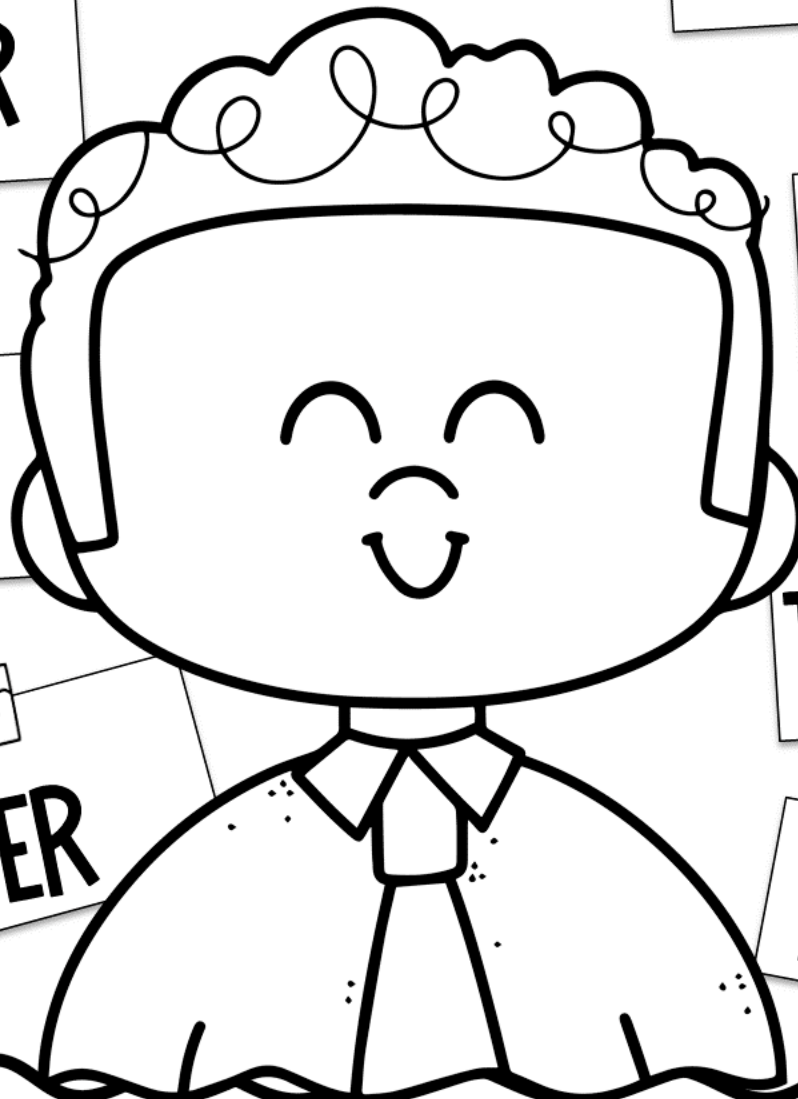
**TEACHER**



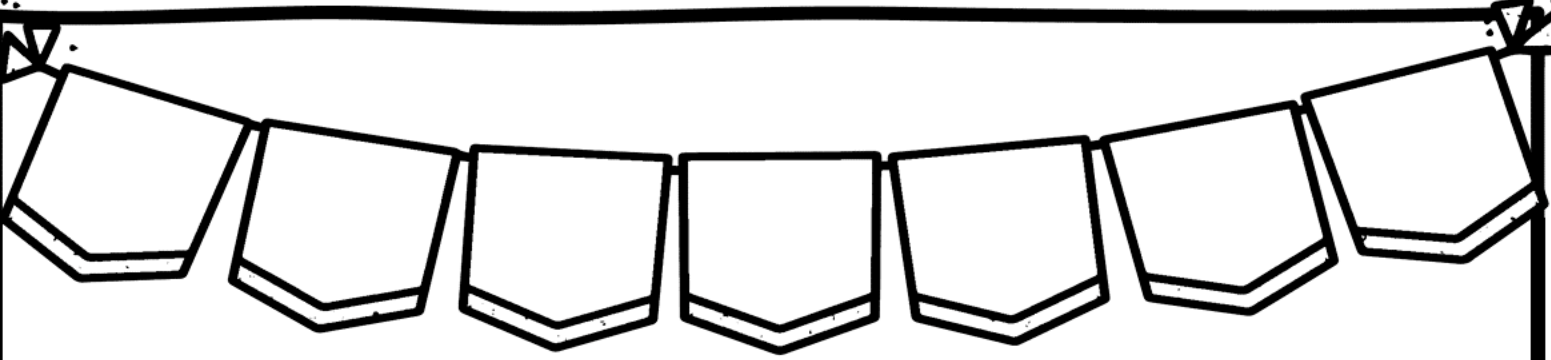
**LISTENER**



**LEADER**







# MY SCHOOL COUNSELOR



**ADVOCATE**



**SUPPORTER**



**MENTOR**



**SOLVER**



**HELPER**



**TEACHER**

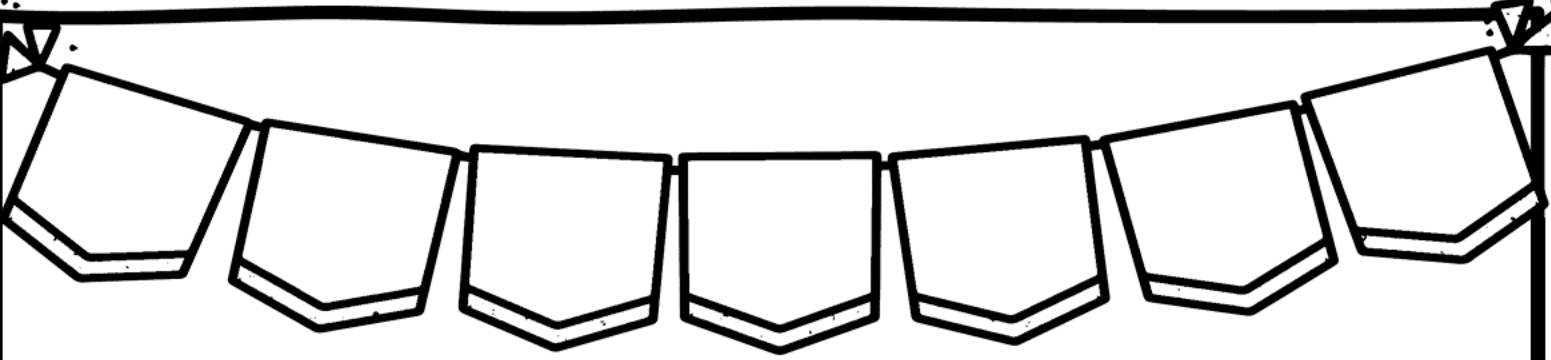


**LISTENER**



**LEADER**





# MY SCHOOL COUNSELOR



**ADVOCATE**



**SUPPORTER**



**MENTOR**



**SOLVER**



**HELPER**



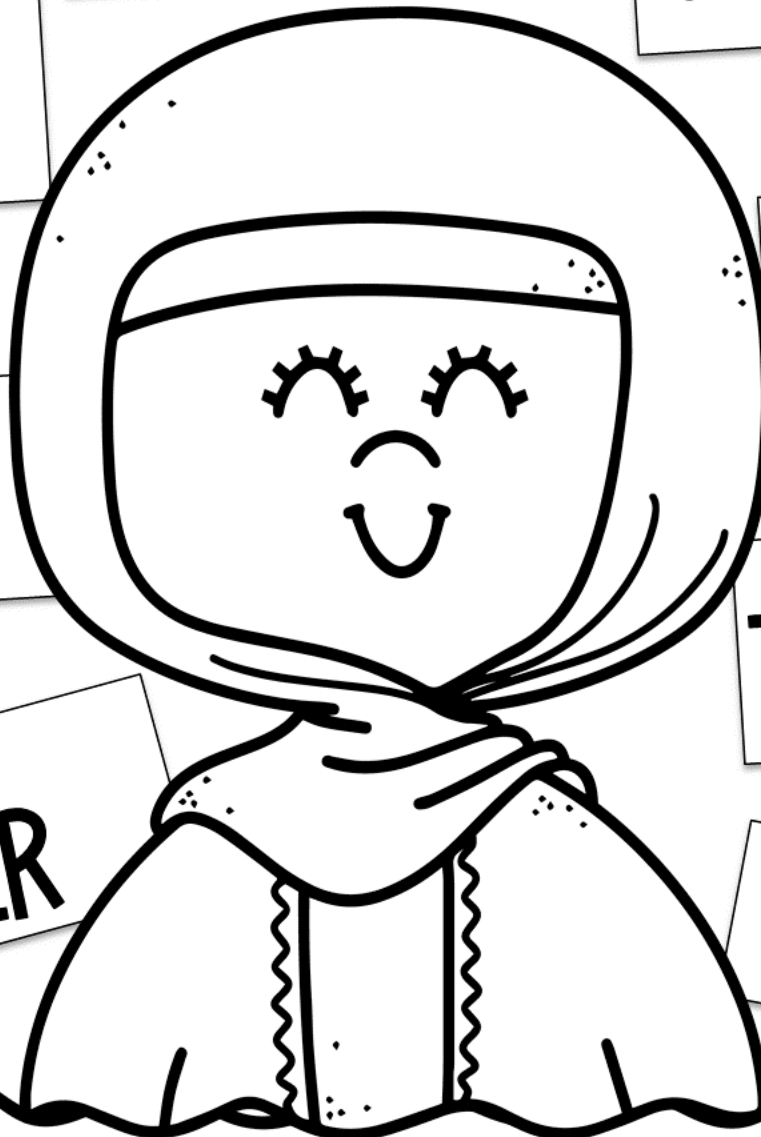
**TEACHER**

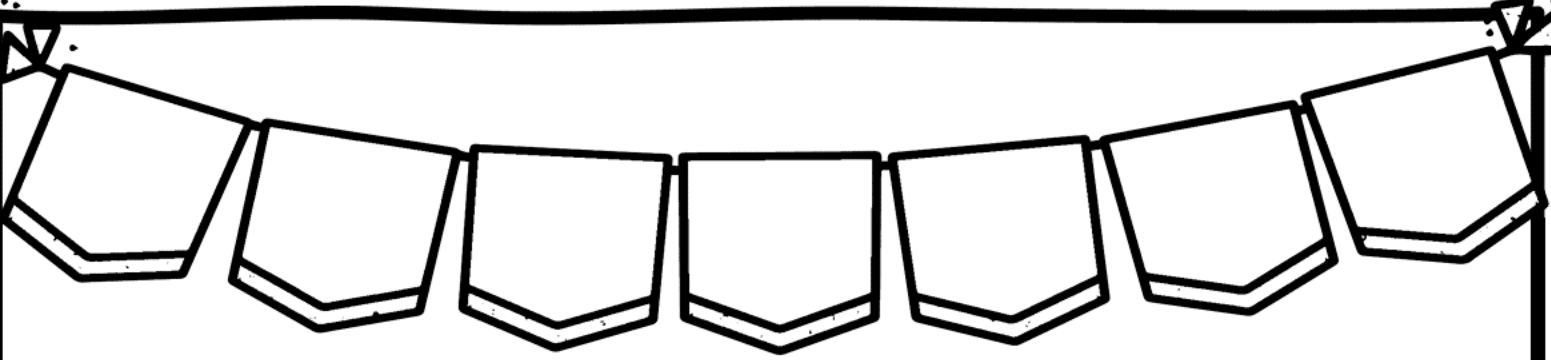


**LISTENER**



**LEADER**





# MY SCHOOL COUNSELOR



**ADVOCATE**



**SUPPORTER**



**MENTOR**



**HELPER**



**SOLVER**



**TEACHER**

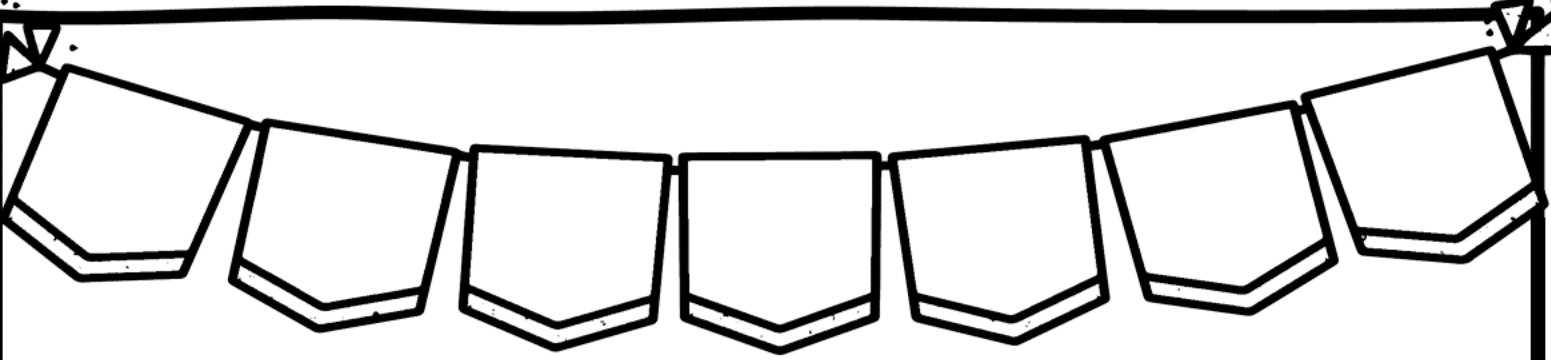


**LISTENER**



**LEADER**





# MY SCHOOL COUNSELOR



**ADVOCATE**



**SUPPORTER**



**MENTOR**



**HELPER**



**SOLVER**



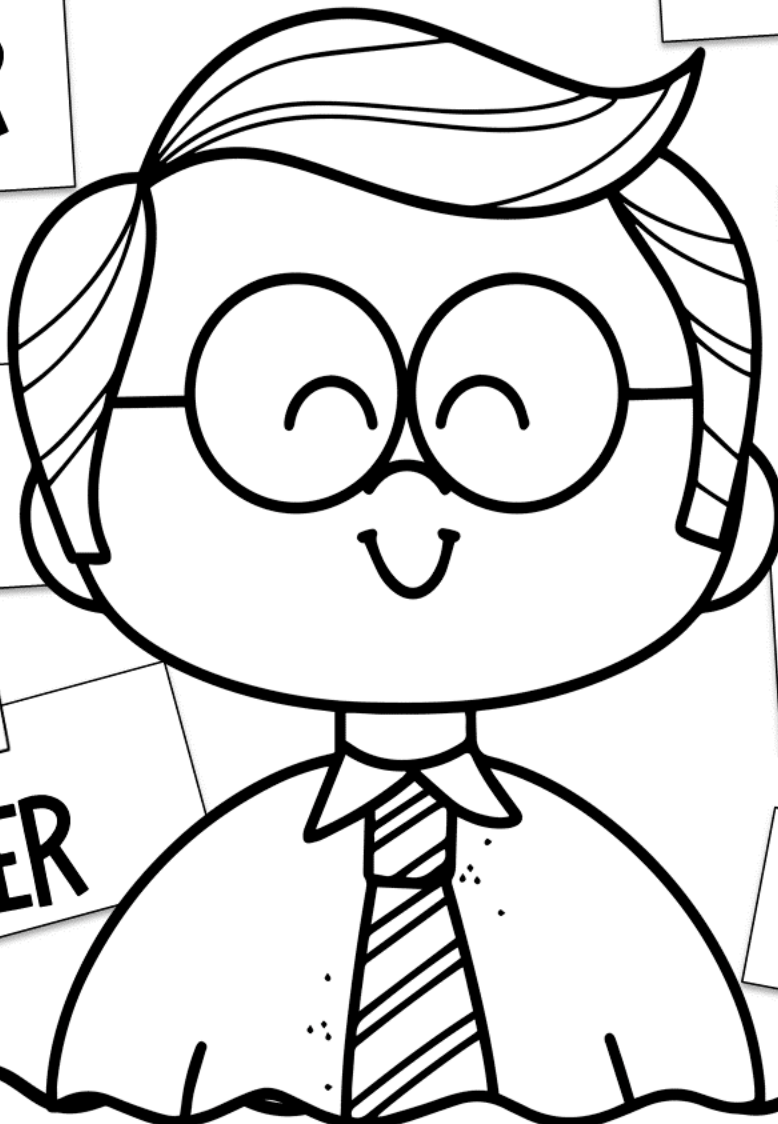
**TEACHER**



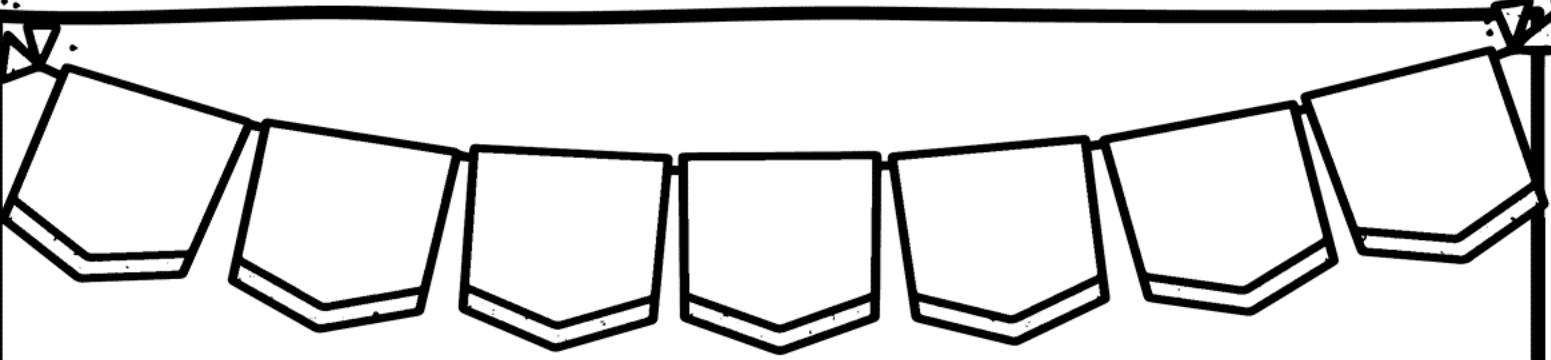
**LISTENER**



**LEADER**







# MY SCHOOL COUNSELOR



**MENTOR**



**ADVOCATE**



**SUPPORTER**



**HELPER**



**SOLVER**



**LISTENER**



**TEACHER**



**LEADER**





# MY SCHOOL COUNSELOR



**ADVOCATE**

**SUPPORTER**

**MENTOR**

**SOLVER**

**HELPER**

**LEADER**

**LISTENER**

**TEACHER**

# MY SCHOOL COUNSELOR

**ADVOCATE**

**SUPPORTER**

**MENTOR**

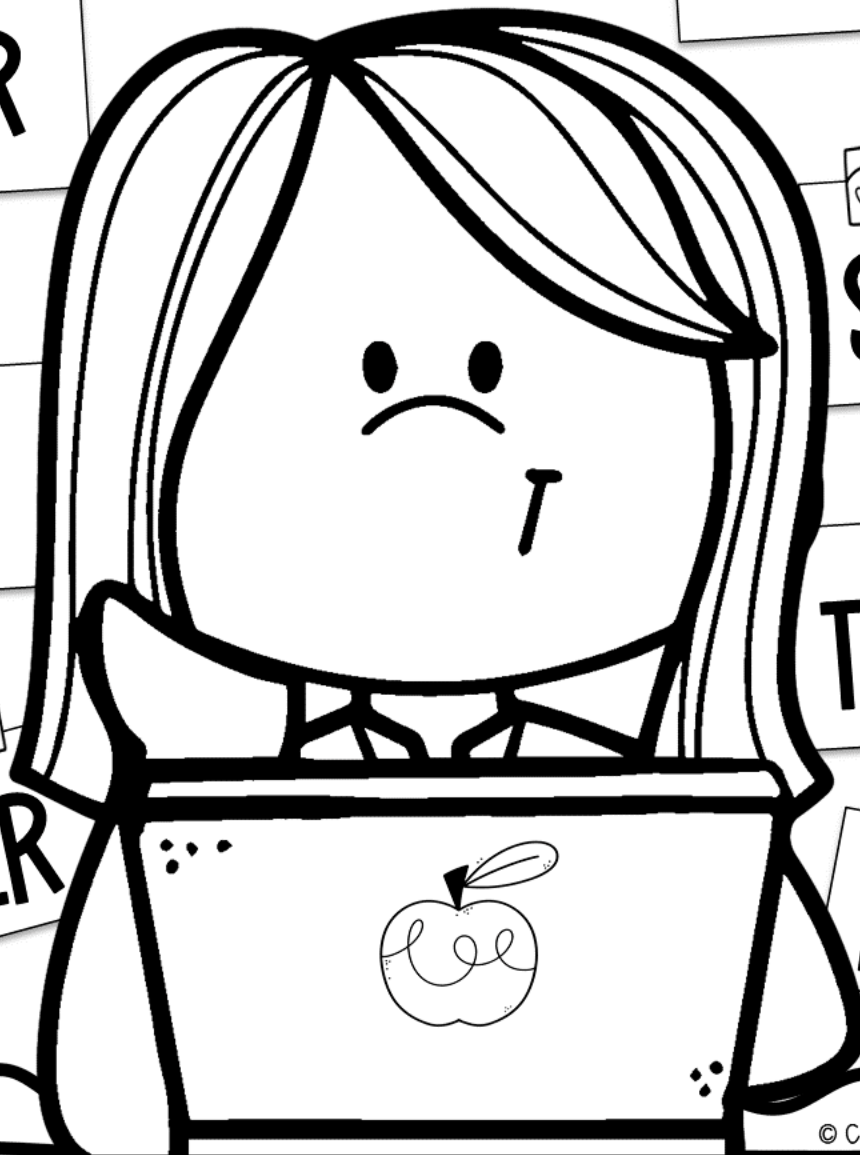
**SOLVER**

**HELPER**

**TEACHER**

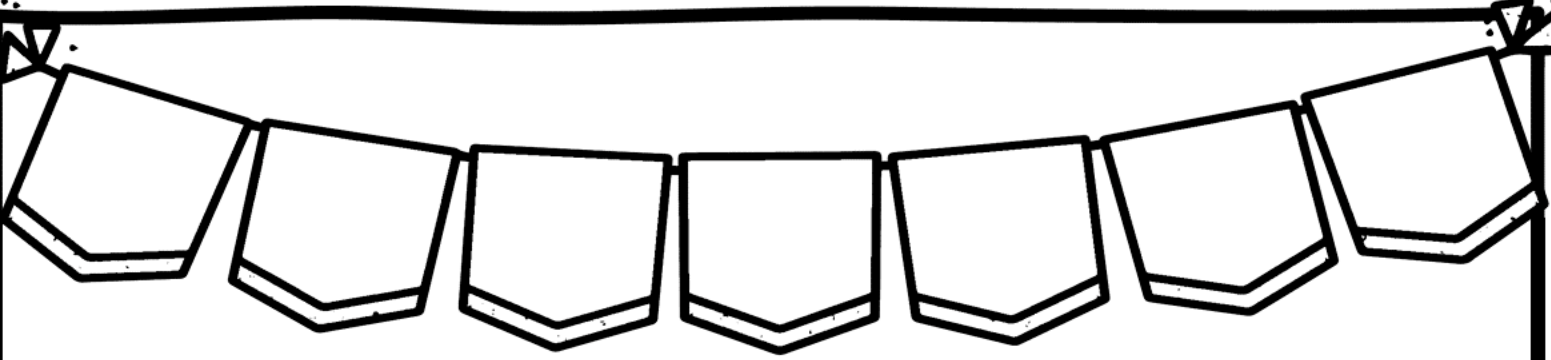
**LISTENER**

**LEADER**



# FILL IN THE BLANK ACTIVITY





# MY SCHOOL COUNSELOR



**ADVOCATE**



**SUPPORTER**



**MENTOR**



**SOLVER**



**HELPER**



**TEACHER**



**LISTENER**



**LEADER**

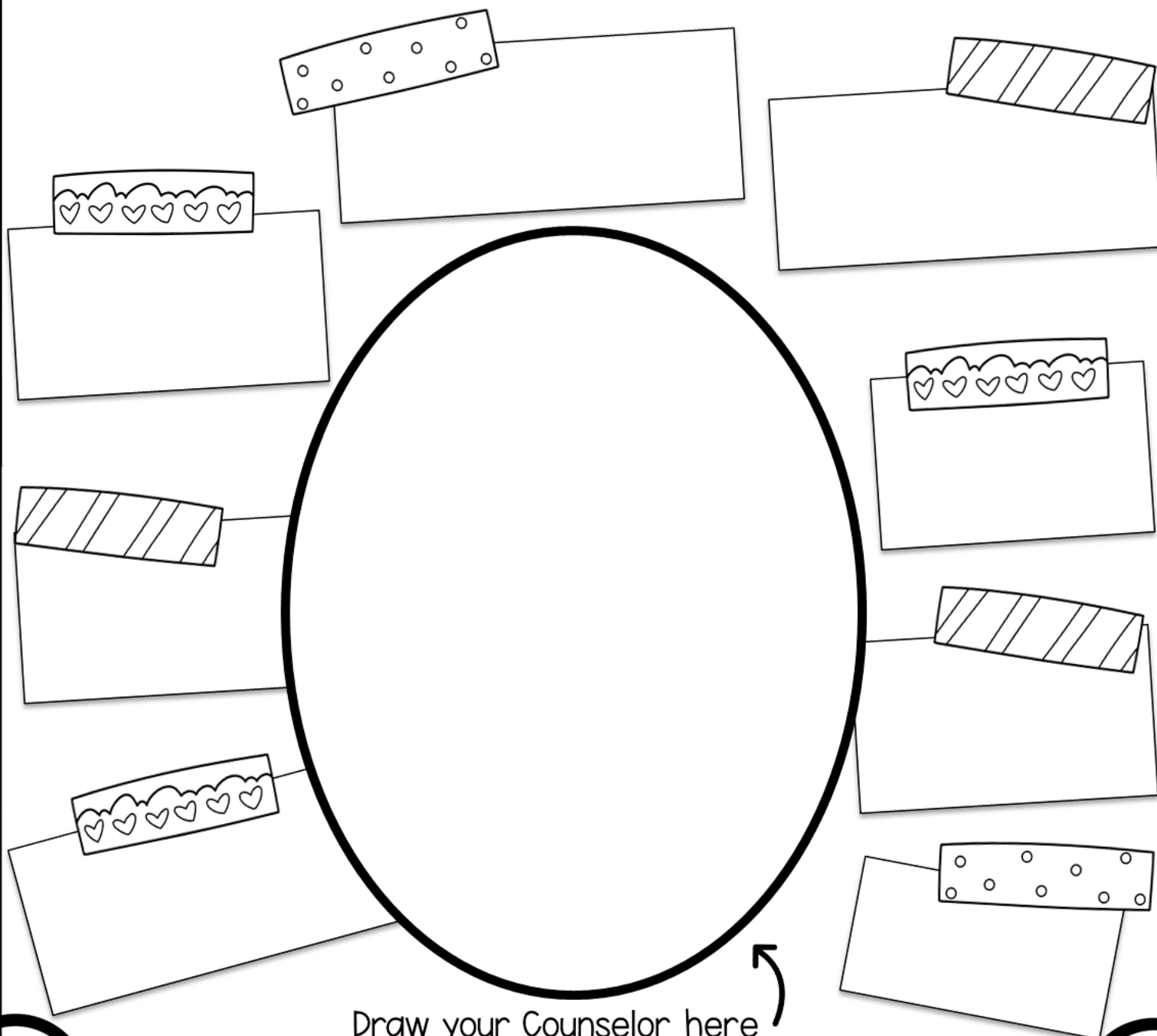


Draw your Counselor here



# MY SCHOOL COUNSELOR

Write in the spaces below the traits that describe what  
your School Counselor does.

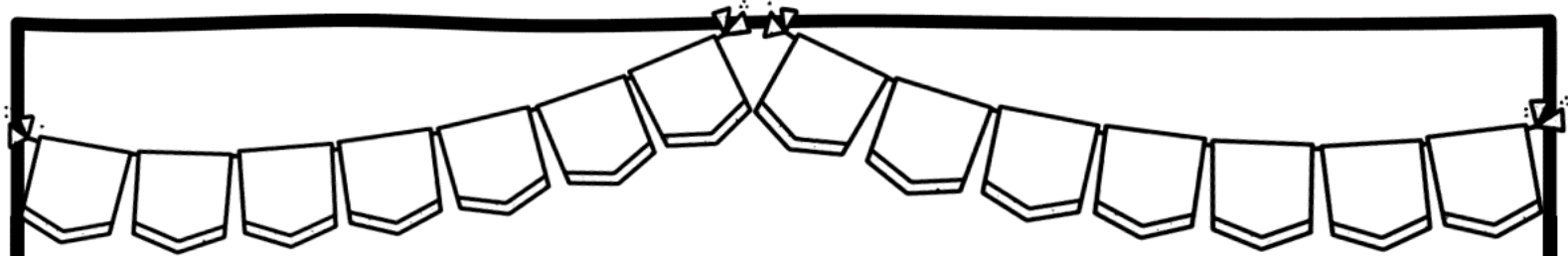


The worksheet includes eight rectangular boxes for writing traits, each with a decorative tab:

- Top-left: Tab with polka dots.
- Top-right: Tab with diagonal stripes.
- Middle-left: Tab with a row of hearts.
- Middle-right: Tab with a row of hearts.
- Bottom-left: Tab with diagonal stripes.
- Bottom-right: Tab with diagonal stripes.
- Bottom-left (inner): Tab with a row of hearts.
- Bottom-right (inner): Tab with polka dots.

Draw your Counselor here

# CUT AND PASTE ACTIVITY

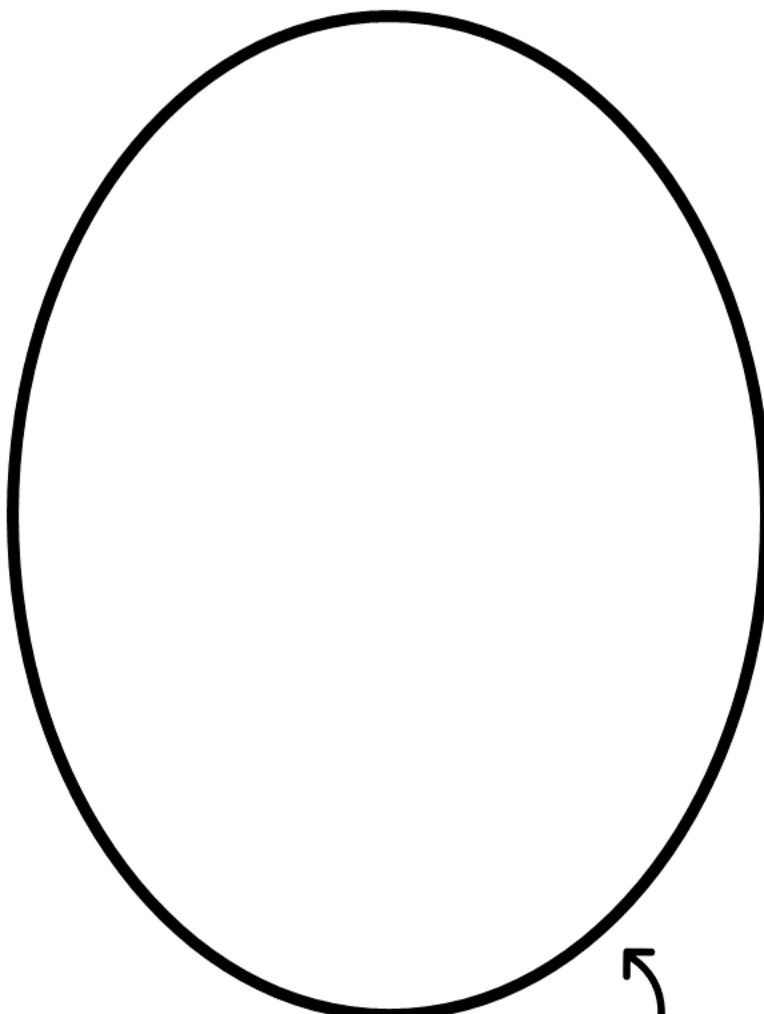


# MY SCHOOL COUNSELOR

Cut the traits that describe what your School Counselor does (on the next page), and paste them to this page around the picture of your counselor.

My School Counselor's name is:

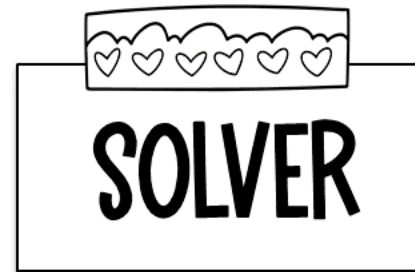
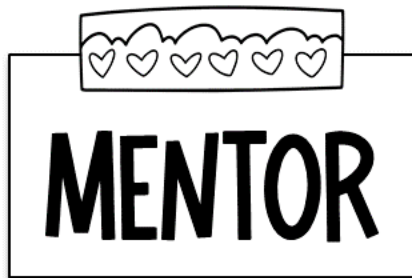
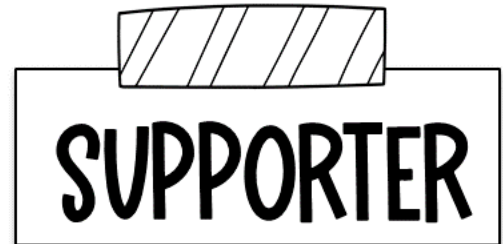
\_\_\_\_\_



Draw your Counselor here



Cut the traits below that describe what your School Counselor does, and paste them to the previous page.





# GOOGLE SLIDES

Your resource comes with a digital version for use in Google Slides via Google Classroom. Follow these steps to upload your resource.

**1** Click here  [NSCW POSTERS AND ACTIVITY](#)

**2** You will be prompted to make a copy of the resource. Click on the blue box that says “Make a copy” and the resource will go directly into your Google drive.

Google Drive

Copy document

Would you like to make a copy of Career Interest Inventory?

Make a copy



**3** Go to your Google Drive and locate the copy of the file. You can rename the file at this point or add/delete slides.

**4** Next, go to your Google Classroom and add an assignment. Select the Google Drive Symbol and select the resource you want to assign.

**5** From here, you should see a grey box that says “Students can view file.” Click the grey box. A dropdown menu should appear. Select, “Make a copy for each student.”

**YOU HAVE TO MAKE A COPY FOR EACH STUDENT!**

Otherwise they will all be editing the same file.

Click “Assign” in the top right corner if you’re ready to post!

This product is meant to be used in “edit” mode (not “presentation” mode). Edit mode is the only mode that allows drag & drop and writing in text boxes.

Helpful links for using Google Classroom:

[Teacher Tips for using Google Classroom \(TPT blog\)](#)

[Getting Started with Google Classroom \(youtube video\)](#)

# COUNSELOR Collab

Check out our  
[Curriculum Map](#)

## REFER A FRIEND

Get \$10 in resources of your choice,  
and a laptop sticker mailed to you  
and your friend!

Check out our  
[ASCA Mindsets & Standards](#).

We want to support you, follow us to get tips, ideas,  
and positive vibes by clicking on the hearts below.



♥ Counselor Collab on Instagram

♥ Counselor Collab on Facebook

♥ Counselor Collab Members-Only Facebook Group

## Laura & Ashley

## UPGRADE TO A YEARLY MEMBERSHIP

If you are a monthly member and wish that you could access ALL of our curriculum all at once, you can upgrade to a yearly membership any time! Your cost to upgrade will be prorated and you will not be charged for any months that you have already paid for with your monthly membership.

## CREDITS



Email us with any questions!

[lauraashley@counselorcollab.com](mailto:lauraashley@counselorcollab.com)

## TERMS OF USE

© Counselor Collab™, 2023. All rights reserved. Purchase of this resource membership entitles the purchaser the right to reproduce for classroom, personal, and google classroom use only. Use by multiple counselors, requires the purchase of additional memberships. Redistribution or duplication of this product is strictly forbidden without the written permission of the publisher. Copying any part of this product and placing it on a publicly accessible website is strictly forbidden and is a violation of the Digital Millennium Copyright Act (DMCA). You may post this for single-classroom use on a password protected student site such as google classroom. Please do not sell or distribute any part of this as your own. Thank you for abiding by universally accepted codes of professional ethics while using this product.